

Coils: Aluminum

kVA: 300

Primary: 480/240/208 Delta Volts

Secondary: 415/400/380 Wye Volts

Primary Taps: 5 % @ 480V

-Taps FCAN 1

-Taps FCBN 1

Frequency: 60 Hz

BIL: 10 kV

Insulation Class: 220 °C

Temperature Rise: 150 °C

Impedance: 4.0 - 6.0 %

Weight: 1900 Lbs

- 3 Phase Isolation
- Dry Type
- ANN Self Cooled

Windings	Location	Terminations
Primary	Front	Pads*
Secondary	Front	Pads*
Ground lug @ the base of enclosure: 4 ports 2/0-14 AWG		

*NEMA terminal connector dimensions (CC 1-2009 Annex C)

Wiring Connection:

Primary:

Voltage	% Tap
504	105.0
480	100.0
456	95.0
240	—
208	—

Jumpers To:

1-1-1
2-2-2
3-3-3
4-4-4
5-5-5

Secondary:

Voltage
415Y/240
400Y/231
380Y/220

Connect Loads To:

X0-X1-X2-X3
X0-X4-X5-X6
X0-X7-X8-X9

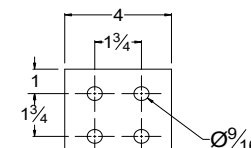
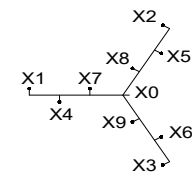
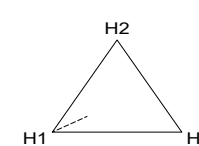
Note: Secondary is fully rated - only one to be used at a time

Standards:

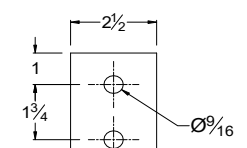
- 1)- CSA Certified
- 2)- UL Listed

Standard Features:

- 1)- Anti-vibration pads installed between the enclosure base and the core & coil assembly
- 2)- Lug for Earth grounding provided



PRIMARY PADS*

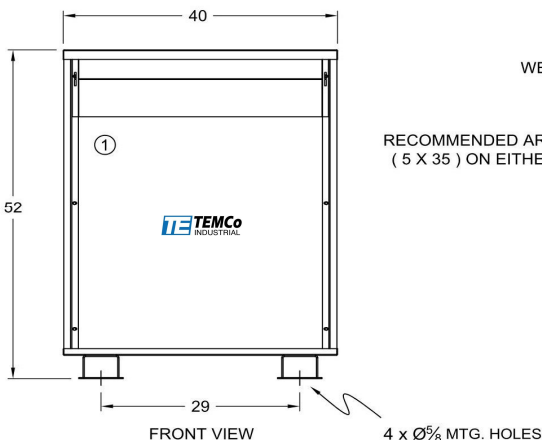


SECONDARY PADS*

CSA Enclosure:

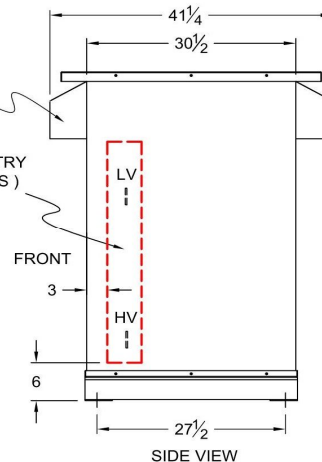
- 1)- Type 3R (NEMA 3R)
- 2)- Ventilated
- 3)- ASA 61 grey
- 4)- Floor mounting

① - REMOVABLE PANELS FOR EASY ACCESS TO TERMINALS



RECOMMENDED AREA FOR CABLE ENTRY
(5 X 35) ON EITHER SIDE (BY OTHERS)

WEATHER SHIELD



Rev.	Remarks	By	Appr. By	Date

Prepared by: AP
Approved by: VS
Date: APR. 14, 2025